

REFERENCE GUIDE

Line Hardware



LineHardware.com





Line Hardware

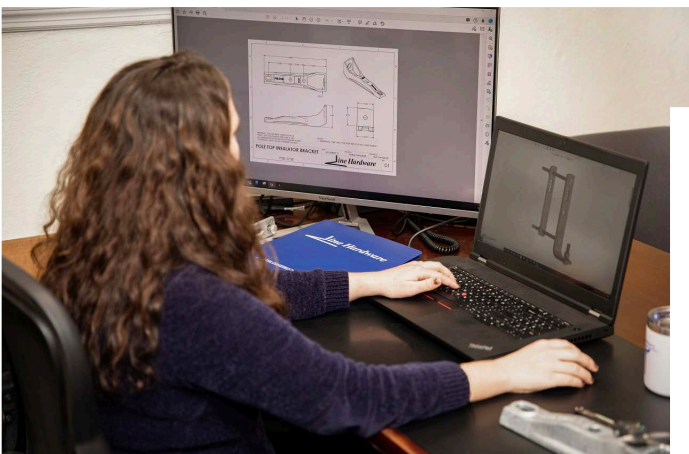
Line Hardware is a WBENC Certified Woman-Owned Business that has been serving the line construction industry with custom-designed products since 1970. We meticulously source the highest-grade ductile iron, hot-rolled steel, bronze, copper and aluminum alloy to guarantee our products meet rigorous standards for strength, electrical conductivity and machinability.

As a stocking manufacturer, we prioritize the swift availability of our high-quality products. Over a third of our inventory is proudly manufactured at our facility in St. Louis, Missouri, highlighting our commitment to stringent quality control and meeting domestic production requirements.

What Sets Line Hardware Apart:

- **Quality Assurance:** Rigorous quality control ensures our hardware meets the highest standards.
- **Customer Focus:** We understand the importance of time in your projects and offer quick turnaround on orders, quotes, and responses with regular status updates, ensuring a seamless experience from inquiry to delivery.
- **Stocking Manufacturer:** Our extensive inventory allows for immediate access to a wide range of products, providing convenience and flexibility for your project needs.
- **Customization:** Tailored solutions to meet the unique requirements of every customer.

From our commitment to quality assurance and quick turnaround, to our family-rooted values, see why customers across the nation choose us for their Line Hardware needs.



ALPHABETICAL INDEX

GROUNDING EQUIPMENT

Arcing Horns	1
Bronze Couplings.....	2
Copper Pole Ground Plates.....	1
Copper Pole Ground Eyebolt Plates.....	1
Cut Point Staples.....	2
Diamond Point Staples.....	2
Ground Lugs.....	2
Ground Rods.....	1
Ground Rod Clamps.....	1
Ground Wire Clips.....	2
Hot Line Clamps.....	2
Non-Static Ground Wire Clips.....	2
Parallel Jumper Clamps.....	2
Tower Bonding Clips.....	2
Transformer Ground Connectors.....	2
U-Bolt Ground Clamps.....	1
Water Pipe Ground Clamps.....	1

GUYING MATERIAL

Bolt Eyelets.....	4
Combination Guy Attachments.....	3
Deadend Tees.....	5
Ground Bond Clamps.....	4
Hook Guy Attachments.....	3
Lift Plates.....	4
Malleable Guy Clips.....	5
Oval Eyenuts.....	4
Pole Bands.....	3
Pole Band Connecting Links.....	3
Pole Band Fittings.....	3
Pole Eye Plates.....	3
Rod Bonding Clamps.....	4
Sheave Wheels.....	5
Sidewalk Guy Fittings.....	3
Thimble Eyelets.....	4
Thimble Eye Nuts.....	4

GUYING MATERIAL-CONT.

Universal Guy Attachments.....	3
U-Bolt Guy Clamps.....	4
3-Bolt Guy Clamps.....	4

CONNECTORS & ADAPTERS

Bronze Transformer Tap Adapters.....	5
Single or Double Eyebolts.....	5
Transformer Spade Connectors.....	5

CONDUCTOR HARDWARE

Anchor Shackles.....	7
Angle Clamps.....	7
Ball Clevis.....	9
Ball Eye Clevis.....	9
Ball Hooks.....	7
Ball Y-Clevis.....	9
Bolt Eyelets.....	7
Bronze Vice Connectors.....	10
Cable Messenger Hangers.....	10
Chain Links.....	7
Clevis Clevis.....	8
Clevis Eyes.....	9
Double Arming Plates.....	7
Double Upset Spool Insulator Bolts.....	6
Extension Links.....	8
Extension Links Clevis Assembly.....	8
Extension Links Clevis-Eye.....	8
Extension Links Clevis-Clevis.....	8
Extension Links Eye-Eye.....	8
Figure 8 Links.....	7
High Voltage Pins.....	10
Insulated Deadend Clevis.....	8
Insulated Secondary Clevis.....	9
Line Post Studs Double Coil.....	6
Line Post Studs Long Shank.....	6



ALPHABETICAL INDEX

CONDUCTOR HARDWARE-CONT.

Line Post Studs Short Shank.....	6
Low Voltage Pins.....	10
Neutral Wire Brackets.....	7
Offset Pole Top Pins.....	10
Oval Eyunuts.....	7
Oval Eye Bolts.....	6
Pilot Point Drive Hooks.....	10
Pole Top Pins.....	10
Quadrant Strain Clamps.....	6
Secondary Racks.....	10
Single Upset Spool Insulator Bolts.....	6
Socket Eyes.....	9
Steel Crossarm Braces.....	10
Straight Line Dead End Clamps.....	6
Thimble Clevis.....	8
Y-Clevis Eyes.....	9

EQUIPMENT MOUNTS

Aluminum Pole Top Insulator Brackets..	11
Angle Mounting Brackets.....	12
Cable Rack Arms.....	12
Combination Extension Brackets.....	11
Combination T-Brackets.....	11
Conduit Support Bracket Assembly.....	13
Crossarm Mounting Brackets.....	11
Cutout Arrestor Brackets.....	11
Cutout Lightning Arrestor Brackets.....	13
Double Arming Brackets.....	11
Equipment Mounting Straps.....	12
Insulator Brackets.....	12
Mast Clamps.....	12
Pipe Straps.....	12
Pole Top Insulator Brackets.....	11
Riser Mounting Brackets.....	12
Streetlight Arm Brackets.....	12
Tank Mounted Surge Arrestor Brackets..	11
Underground Cable Mounting Brackets.	13
Vertical Insulator Brackets.....	12

WASHERS & FASTENERS

Carriage Bolts.....	16
Common Steel Nails.....	16
Cotter Keys.....	16
Curved Washers.....	14
Curved Square Washers.....	14
Double Arming Bolts.....	16
Double Coil Lock Washers.....	14
Flat Round Washers.....	14
Hex Nuts.....	15
Lag Screws Fetter Drive Regular Point...	15
Lag Screws Fetter Drive Pilot Point.....	15
Lag Screws Gimlet Point.....	15
Lag Screws Neoprene Washer.....	15
Lag Screws Twist Drive.....	15
Lock Washers.....	14
Machine Bolts.....	16
Round Washers.....	14
Square Curved Washers.....	14
Square Flat Washers.....	14
Square Lock Nuts.....	15
Square Nuts.....	15
Stainless Steel Hex Bolt Assembly.....	16
Star Lock Washers.....	14
Washer Nuts.....	15
Washerhead Bolts.....	16

POLE & CROSSARM ACCESSORIES

Crossarm Gains.....	17
Crossarm Reinforcing Plates.....	17
Crossarm Spacers.....	17

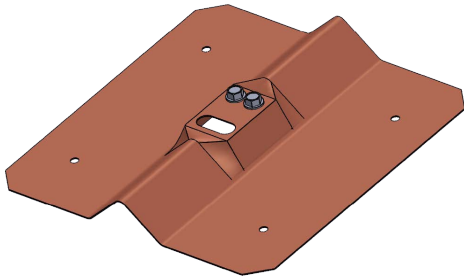
PLASTIC PRODUCTS

Wildlife Protective Boots.....	17
--------------------------------	----

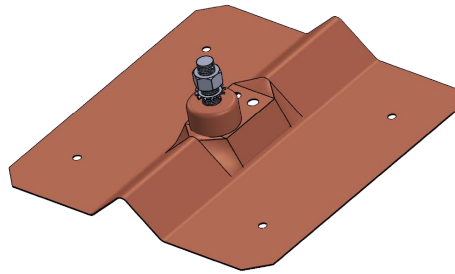
CROSS REFERENCE GUIDE 18-25



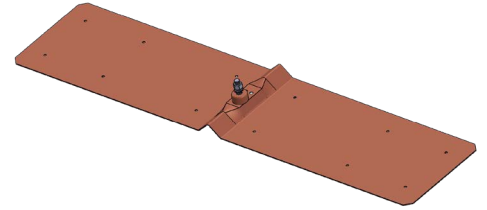
GROUNDING EQUIPMENT



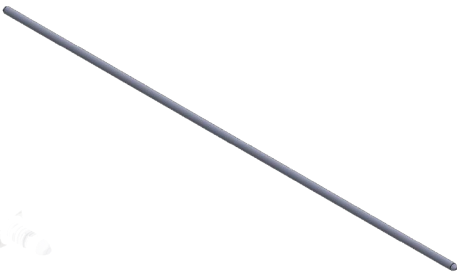
Copper Pole Ground Plates
PGPC Series



Copper Pole Ground Eyebolt Plates
PGPC-EB Series



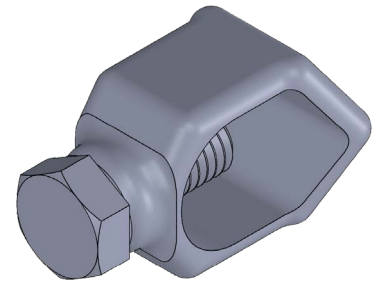
Copper Pole Ground Plates
PGPC-288EB Series



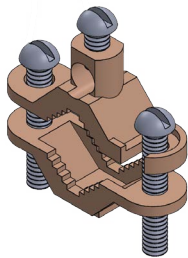
Ground Rods
GR Series



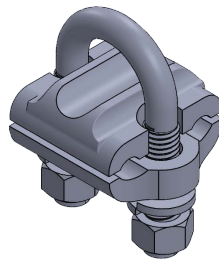
Arcing Horns
AH Series



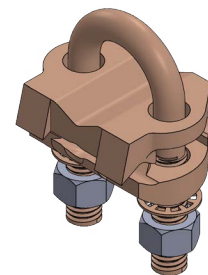
Ground Rod Clamps
RC Series



Water Pipe Ground Clamps
WPC Series



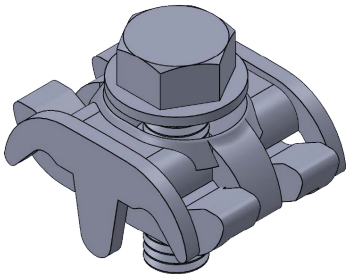
U-Bolt Ground Clamps
UGC-F Series



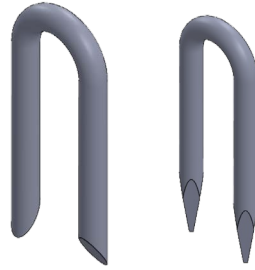
Bronze U-Bolt Ground Clamp
UGC Series



GROUNDING EQUIPMENT



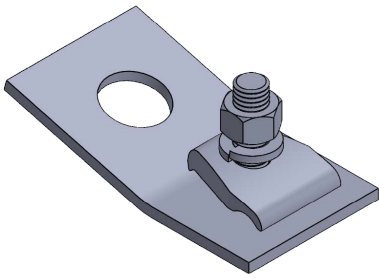
Parallel Jumper Clamps
PJC Series



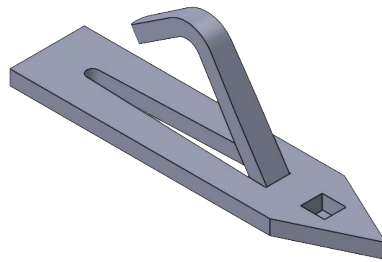
Cut & Diamond Point Staples
STC & STD Series



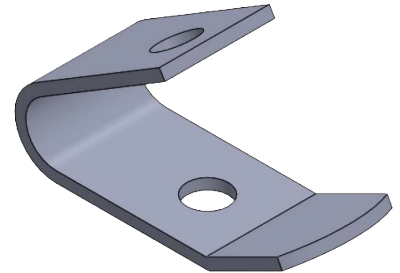
Bronze Couplings
CBC Series



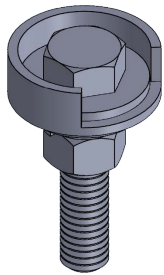
Tower Bonding Clips
TBC Series



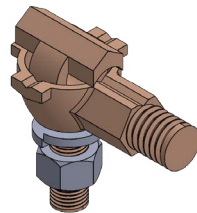
Non-Static Ground Wire Clips
WCNS Series



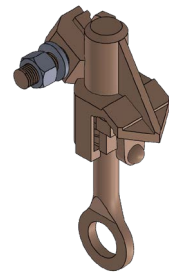
Ground Wire Clips
WC Series



Ground Lugs
GL Series



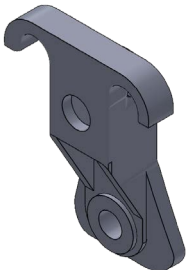
Transformer Ground Connectors
TGL Series



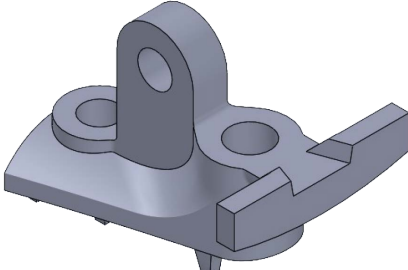
Hot Line Clamps
HLC Series



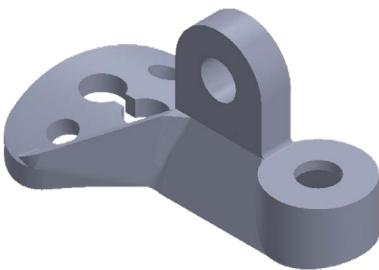
GUYING MATERIALS



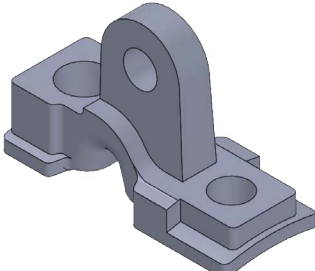
Hook Guy Attachments
HGA Series



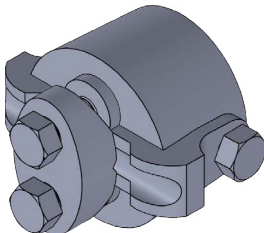
Combination Guy Attachments
CGA Series



Pole Eye Plates
PGA Series



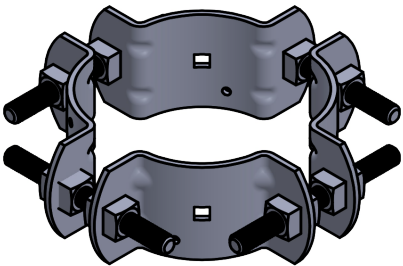
Universal Guy Attachments
UGA Series



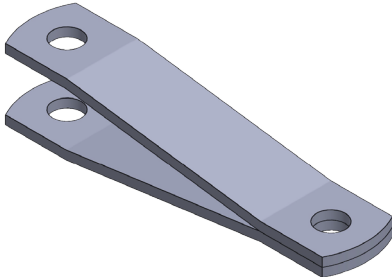
Sidewalk Guy Fittings
SGF Series



Sidewalk Guy Fittings
SGF-2P Series



Pole Bands
HPB Series



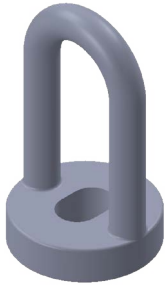
Pole Band Connecting Links
HPB-L Series



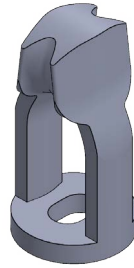
Pole Band Fittings
PBF Series



GUYING MATERIALS



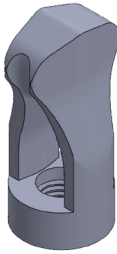
Bolt Eyelets
BEL Series



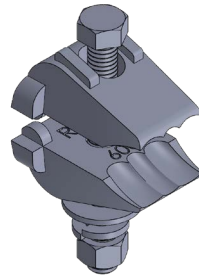
Thimble Eyelets
TEL Series



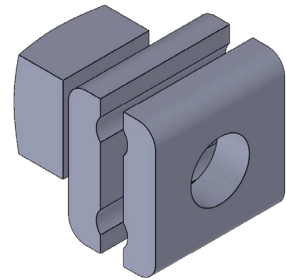
Oval Eye Nuts
OEN Series



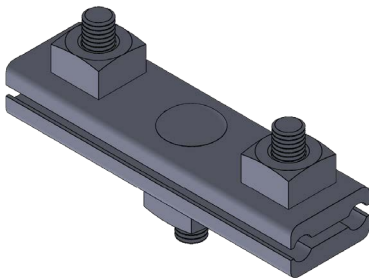
Thimble Eye Nuts
TEN Series



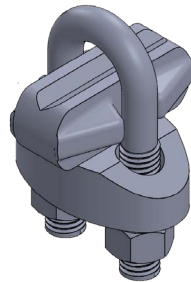
Rod Bonding Clamps
RBC Series



Ground Bond Clamps
GBC Series



3-Bolt Guy Clamps
GC Series



U-Bolt Guy Clamps
UGC Series



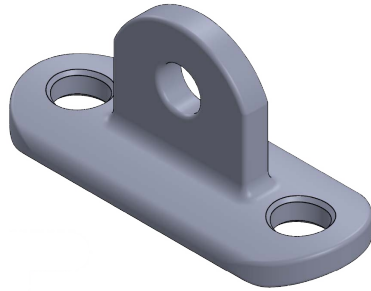
Lift Plates
LP Series



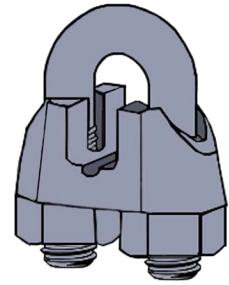
GUYING MATERIALS



Sheave Wheels
SW Series

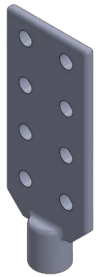


Deadend Tees
CDET Series

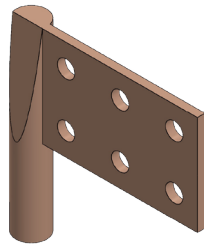


Malleable Guy Clips
MGC Series

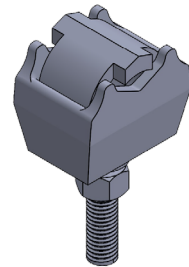
CONNECTORS & ADAPTERS



Transformer Spade Connectors
TSC Series

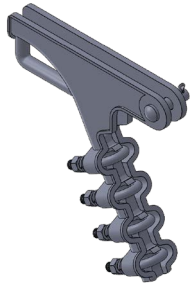


Bronze Transformer
Tap Adapters
TTA Series

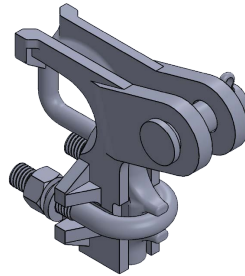


Single or Double Eyebolts
TC Series

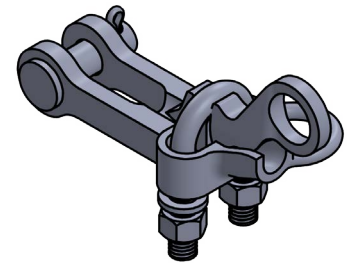
CONDUCTOR HARDWARE



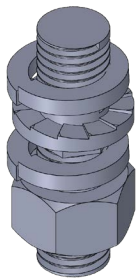
Quadrant Strain Clamps
QSC Series



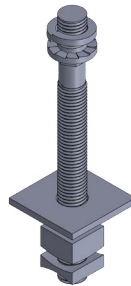
Quadrant Strain Clamps
DCQ Series



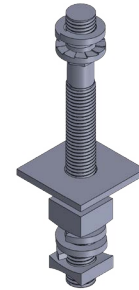
Straight Line Dead End Clamps
SLC Series



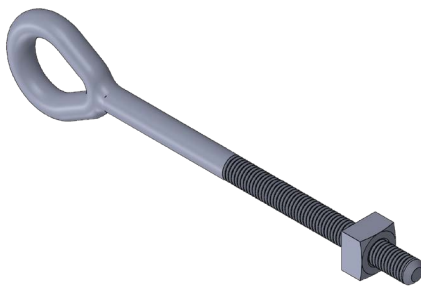
Line Post Studs
Short Shank
LPS Series



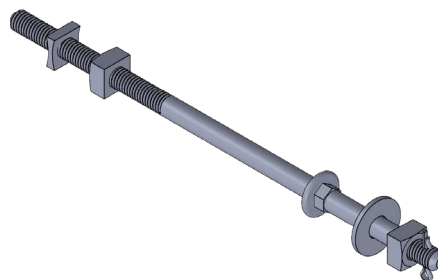
Line Post Studs
Long Shank
LPS Series



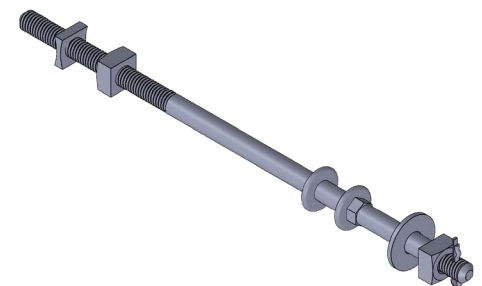
Line Post Studs
Double Coil
LPS-DC Series



Oval Eye Bolts
OEB Series



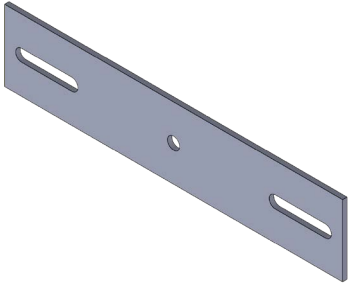
Single Upset Spool
Insulator Bolts
SSB Series



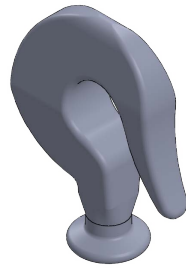
Double Upset Spool
Insulator Bolts
DSB Series



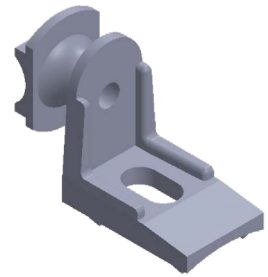
CONDUCTOR HARDWARE



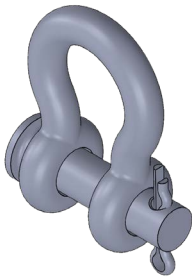
Double Arming Plates
DAP Series



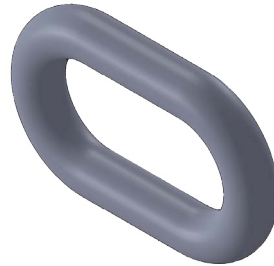
Ball Hooks
BH Series



Neutral Wire Brackets
NWB Series



Anchor Shackles
AS Series



Chain Links
CL Series

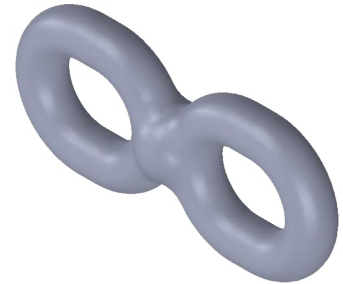
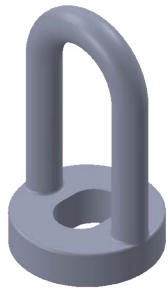


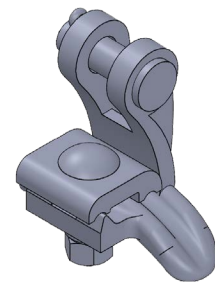
Figure 8 Links
FL8 Series



Bolt Eyelets
BEL Series



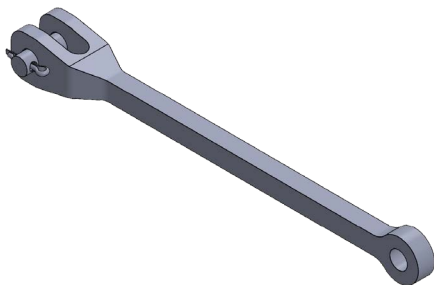
Oval Eyenuts
OEN Series



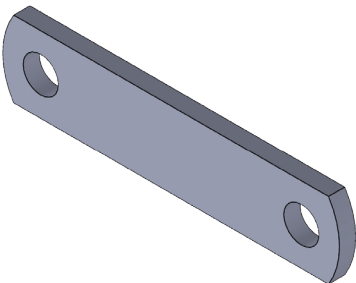
Angle Clamps
AC Series



CONDUCTOR HARDWARE



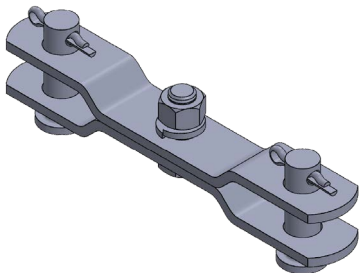
ELC Extension Links
ELC Series



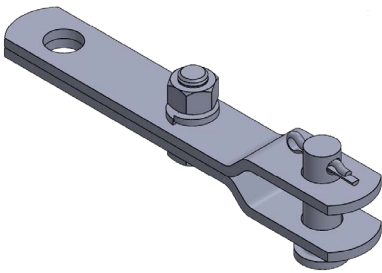
Extension Links Eye-Eye
ELS Series



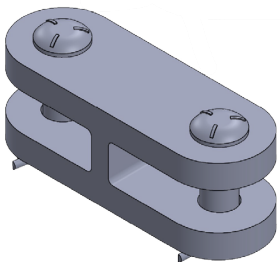
Extension Links Clevis Assembly
ELS-CA Series



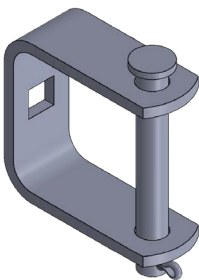
Extension Links Clevis-Clevis
ELS-CC Series



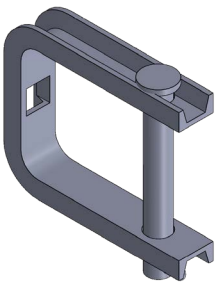
Extension Links Clevis-Eye
ELS-CE Series



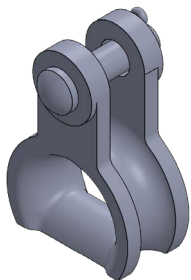
Clevis Clevis
CC Series



Insulated Deadend Clevis
C-3325 Series



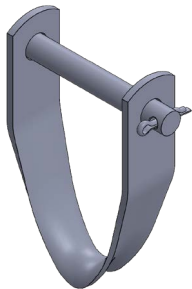
Insulated Deadend Clevis
C-4325 Series



Thimble Clevis
DET Series



CONDUCTOR HARDWARE



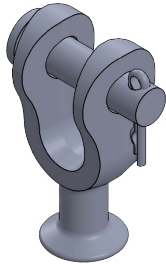
Insulated Secondary Clevis
ISC Series



Insulated Secondary Clevis
SDC Series



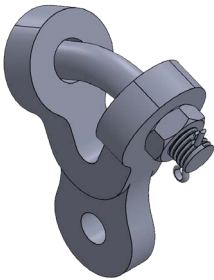
Ball Eye Clevis
BE Series



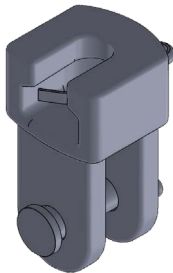
Ball Clevis
BC Series



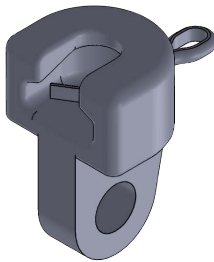
Ball Y-Clevis
BCY Series



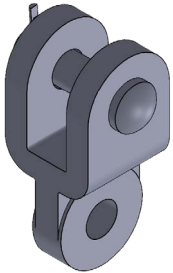
Y-Clevis Eyes
YCE Series



Socket Eyes
SC-90 Series



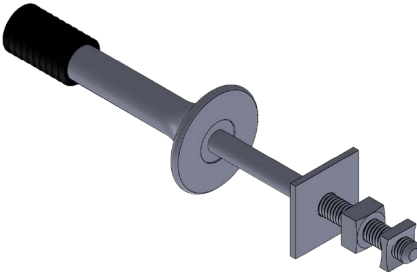
Socket Eyes
SE Series



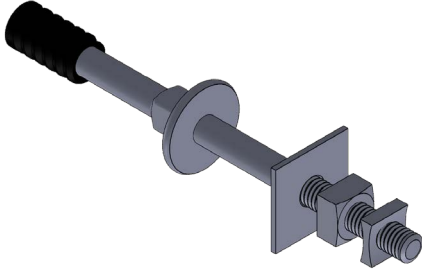
Clevis Eyes
CE Series



CONDUCTOR HARDWARE



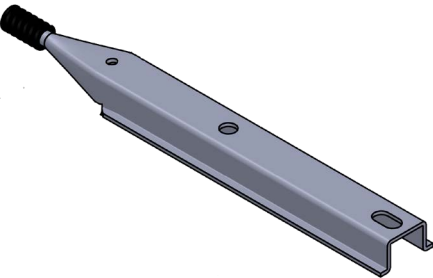
High Voltage Pins
HVP Series



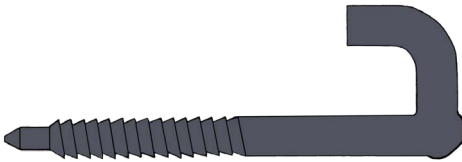
Low Voltage Pins
LVP Series



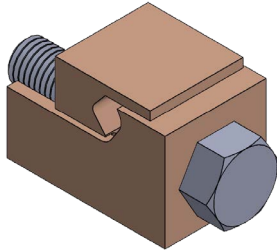
Offset Pole Top Pins
PTPO Series



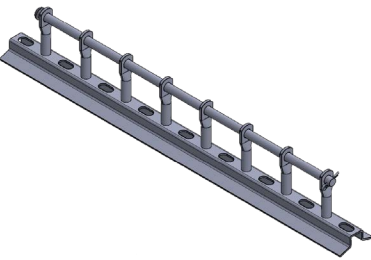
Pole Top Pins
PTP Series



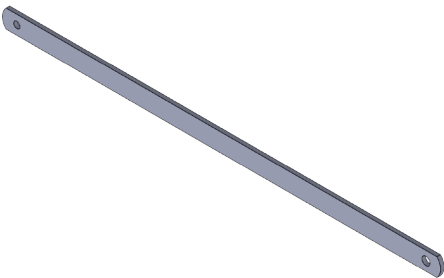
Pilot Point Drive Hooks
DHP Series



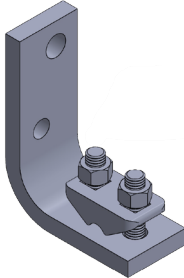
Bronze Vice Connectors
VC Series



Secondary Racks
SR Series



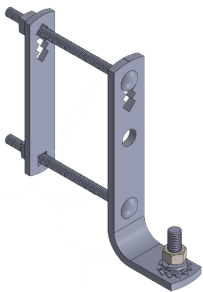
Steel Crossarm Braces
SCB Series



Cable Messenger Hangers
CMH Series



EQUIPMENT MOUNTS



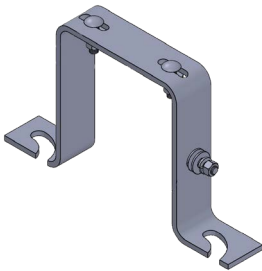
Crossarm Mounting Brackets
CMB Series



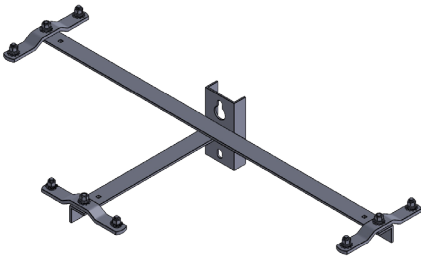
Crossarm Mounting Brackets
CMB-A Series



Combination T-Brackets
CB Series



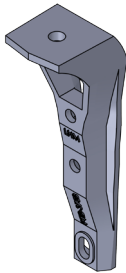
Combination Extension Brackets
CB-5 Series



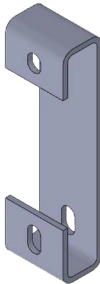
Cutout Arrester Brackets
CB-348 Series



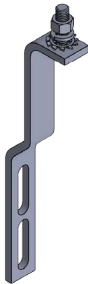
Aluminum Pole Top
Insulator Brackets
APTIB Series



Pole Top Insulator Brackets
PTIB Series



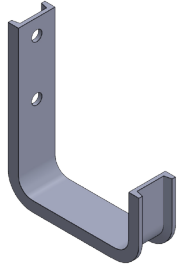
Double Arming Brackets
DB Series



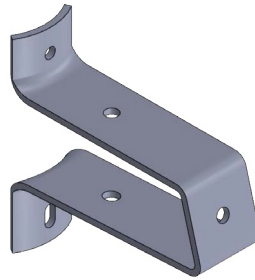
Tank Mounted Surge
Arrester Brackets
TMSA Series



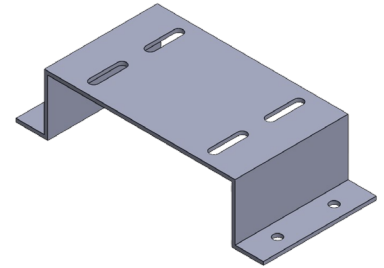
EQUIPMENT MOUNTS



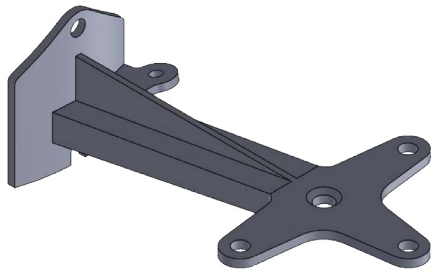
Riser Mounting Brackets
RMB Series



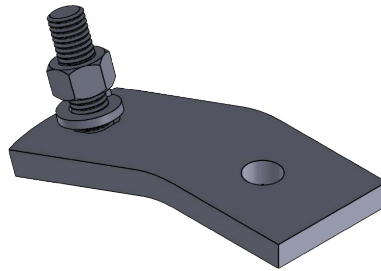
Insulator Brackets
IB Series



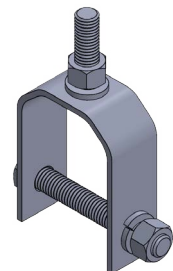
Streetlight Arm Brackets
SAB Series



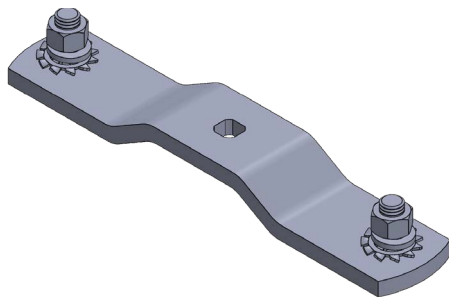
Vertical Insulator Brackets
CA Series



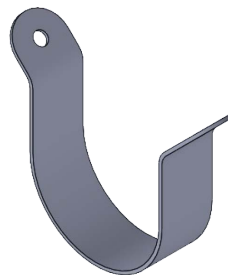
Angle Mounting Brackets
AMB Series



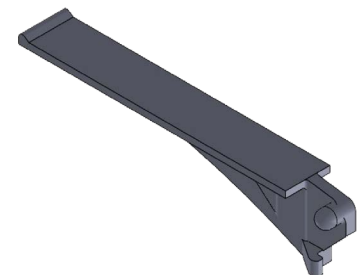
Mast Clamps
PC Series



Equipment Mounting Straps
MS Series



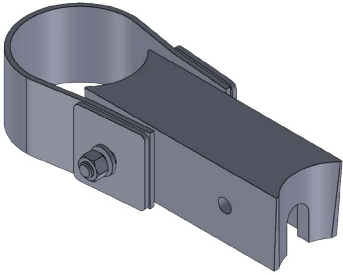
Pipe Straps
PSG Series



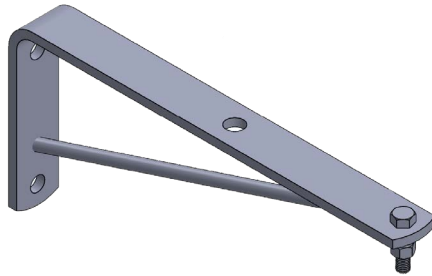
Cable Rack Arms
CRA Series



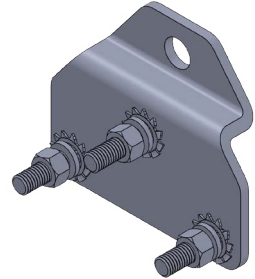
EQUIPMENT MOUNTS



Conduit Support
Bracket Assembly
CSB Series

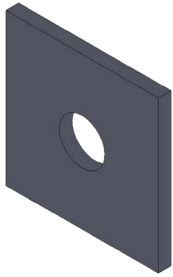


Cutout Lightning Arrestor
Brackets
CLA Series

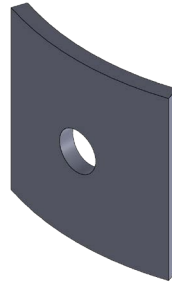


Underground Cable Mounting
Brackets
UCMB Series

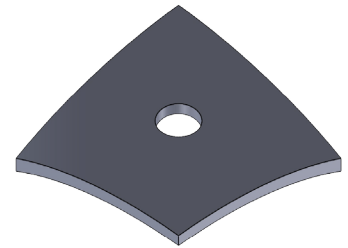
WASHERS & FASTENERS



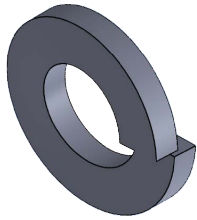
Square Flat Washers
SWF Series



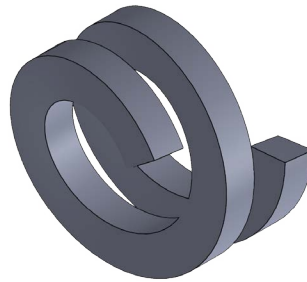
Square Curved Washers
SWC Series



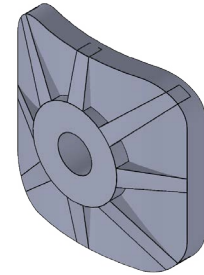
Curved Washers
SWC-45 Series



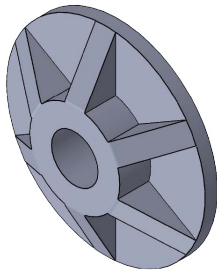
Lock Washers
LW Series



Double Coil Lock Washers
DLW Series



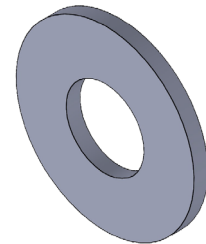
Curved Square Washers
CSW Series



Flat Round Washers
FRW Series



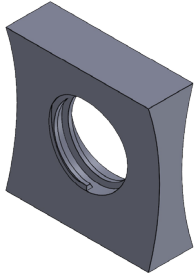
Star Lock Washers
SLW Series



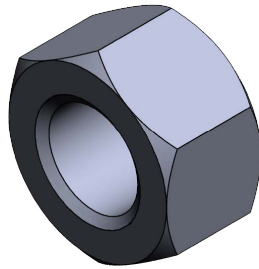
Round Washers
RW Series



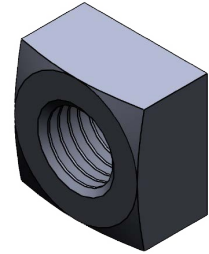
WASHERS & FASTENERS



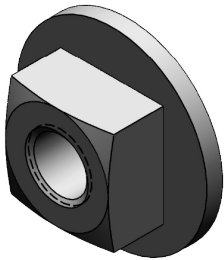
Square Lock Nuts
SLN Series



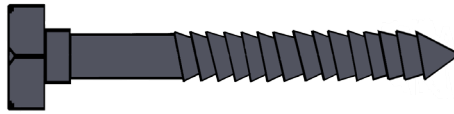
Hex Nuts
HN Series



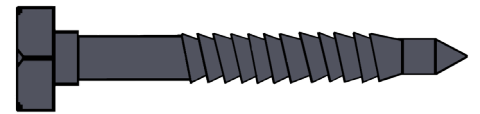
Square Nuts
SN Series



Washer Nuts
WNS Series



Lag Screws Fetter Drive
Regular Point
LSFD-RP Series



Lag Screws Fetter Drive
Pilot Point
LSFD-PP Series



Lag Screws Gimlet Point
LSGP Series

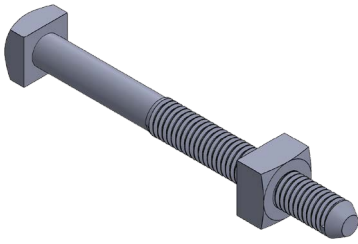


Lag Screws Twist Drive
LSTD Series

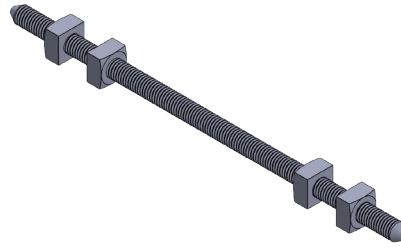


Lag Screws Neoprene Washer
LSNW Series

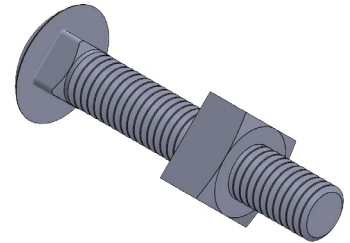
WASHERS & FASTENERS



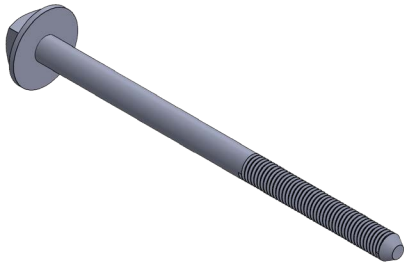
Machine Bolts
MB Series



Double Arming Bolts
DAB Series



Carriage Bolts
CRG Series



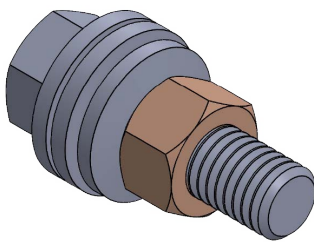
Washerhead Bolts
WHB Series



Cotter Keys
CK Series

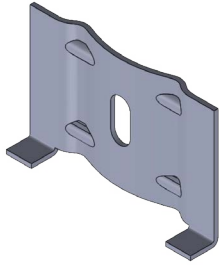


Common Steel Nails
NG & NC Series

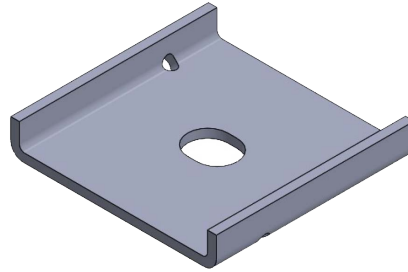


Stainless Steel Hex Bolt
Assembly
HB-SAB Series

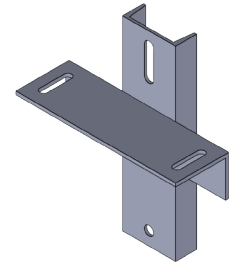
POLE & CROSSARM ACCESSORIES



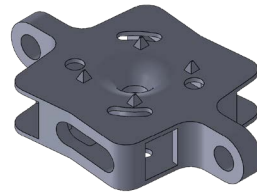
Crossarm Gains
CAG Series



Crossarm Reinforcing Plates
CRP Series



Crossarm Gains
CAG-10 Series



Crossarm Spacers
CAS Series

PLASTIC PRODUCTS



Wildlife Protective Boots
B-C Series



Wildlife Protective Boots
B-OS Series



CROSS REFERENCE GUIDE

LHI	PART DESCRIPTION	HUBBELL	MACLEAN
AC-60	ANGLE SUSPENSION CLAMP	814602000	FAC-75
APTIB-675	ALUMINUM POLE TOP BRACKET	7-5115	BPT-88
AS-1	ANCHOR SHACKLE-25,000 LB	AS25	J2742
AS-1B	ANCHOR SHACKLE WITH BOLT	AS25BNK	ASH-45-BC
AS-2	ANCHOR SHACKLE-30,000 LB	AS25L	ASH-55
AS-2B	ANCHOR SHACKLE-G5 BOLT	AS25LBNK	ASH-55-BC
AS-3	ANCHOR SHACKLE-35,000 LB	AS35	ASH-56
AS-3B	ANCHOR SHACKLE WITH BOLT	AS35BNK	ASH-56-BC
AS-4	ANCHOR SHACKLE-50,000 LB	AS50W	ASH-67
AS-4B	ANCHOR SHACKLE WITH BOLT-60K	AS50WBNK	ASH-67-BC
BC-30	BALL CLEVIS FITTING-30,000LB	BC30	CB-55
BCY-30	BALL Y-CLEVIS-30,000LB	YBC30	YCB-65
BE-30L	BALL EYE CLEVIS	BE30	
BEL-34	BOLT EYELET-3/4 BOLT	B14A	J1127
BEL-58	BOLT EYELET-5/8 BOLT	B14B	J1126
BH-30L	BALL HOOK	BH-5L	HBL-30
C-3325	SECONDARY & DEADEND CLEVIS	0322	-
C-4325	SECONDARY & DEADEND CLEVIS	468	J093
CA-12-1	VERTICAL INSULATOR BRACKET	LB12B1	IAC-12-5
CA-12-3	VERTICAL INSULATOR BRACKET	LB12B3	IACB-12-5
CA-18-1	VERTICAL INSULATOR BRACKET	LB18B1	IAC-18-5
CA-18-3	VERTICAL INSULATOR BRACKET	LB18B3	IACB-18-5
CAS-355	CROSSARM SPACER	CXS1	TAS-55-5
CB-2	CUTOUT & ARRESTER BRACKET	-	J26171
CB-3	CUTOUT & ARRESTER BRACKET	C206-0192	-
CB-3L	CUTOUT & ARRESTER BRACKET	C206-0189	-
CB-4	CUTOUT & ARRESTER BRACKET	C206-0236	-
CB-5-11	11" CUTOUT & ARRESTER EXTENSION BRACKET	C206-0299	J24665
CB-5-7	7" CUTOUT & ARRESTER EXTENSION BRACKET	C206-0547	J24519
CB-8	CUTOUT & ARRESTER BRACKET	-	J24518
CB-9	CUTOUT & ARRESTER BRACKET	-	J26172
CC-30	CLEVIS CLEVIS-30,000 LB	CCC-30	CC-55
CE-1	1/2" CLEVIS EYE-16,000 LB	CA-04	CE-04
CE-2	5/8" CLEVIS EYE-20,000 LB	CA-05	CE-05
CE-3	3/4" CLEVIS EYE-25,000 LB	CA-06	CE-06
CGA-358	5/8" COMB GUY ATTACH-15,000 LB	GEP5	MGA-5
CGA-358-3	3/4" COMB GUY ATTACH-20,000 LB	GEP5A	MGA-345
CGA-358-3A	3/4" COMB GUY ATTACH-20,000 LB	GEP5A34	MGA-345-6
CGA-358-3N	3/4" COMB GUY ATTACH-20,000 LB	GEP5AN	MGA-345N
CL-30	CHAIN LINK-30,000 LB	LK-30	CL-4
CL-40	CHAIN LINK-40,000 LB	LK-40	CL-5
CMB-1	CROSSARM BRACKET, BACKSTRAP & HARDWARE	C206-0127	-
CMB-1A	CROSSARM MOUNTING BRACKET, BACKSTRAP & HARDWARE	DM36B1	J24515



CROSS REFERENCE GUIDE

LHI	PART DESCRIPTION	HUBBELL	MACLEAN
CMB-1A-2INV	CROSSARM MOUNTING BRACKET INVERTED, BACKSTRAP/HARDWARE	C206-0283	-
CMB-1A-DLW	CROSSARM MOUNTING BRACKET, BACKSTRAP & HARDWARE	-	J26620
CMB-1A-L	CROSSARM BRACKET W/NEMA HOLE - BRACKET ONLY	-	J24516
CMB-2	CROSSARM MOUNTING BRACKET	PSC2061053	J24712
CMB-2A	CROSSARM MOUNTING BRACKET, BACKSTRAP & HARDWARE	PSC2061045	-
CMB-4	CROSSARM MOUNTING BRACKET, BACKSTRAP & HARDWARE	C2060651	-
CMB-4-GL	CROSSARM MOUNTING BRACKET, BACKSTRAP & HARDWARE	PSC2060715	-
CMB-4A	CROSSARM MOUNTING BRACKET, BACKSTRAP & HARDWARE	C206-0632	-
CMB-4A-2	CROSSARM MOUNTING BRACKET, BACKSTRAP & HARDWARE KIT	C206-0674	-
CMB-4A-2L	CROSSARM MOUNTING BRACKET ONLY	DM20S3	-
CMB-4A-2X	CROSSARM MOUNTING BRACKET, BACKSTRAP & HARDWARE KIT	PSC2060674	-
CMB-4A-GL	CROSSARM MOUNTING BRACKET, BACKSTRAP & HARDWARE	C206-0280	J24711
CMB-AHS-7	CROSSARM MOUNTING BRACKET HARDWARE SET - 7" BOLTS	T2060631	-
CMB-HS-6	CROSSARM MOUNTING BRACKET HARDWARE SET - 6" BOLTS	-	J24517
CRG-126	1/2" X 6" CARRIAGE BOLT W/SQUARE NUT	8646	J8646
CRG-127	1/2" X 7" CARRIAGE BOLT W/SQUARE NUT	8647	J8647
CRG-3810	3/8" X 10" CARRIAGE BOLT W/SQUARE NUT	400012555	J8640
CRG-3812	3/8" X 12" CARRIAGE BOLT W/SQUARE NUT	400021563	-
CRG-38412	3/8" X 412" CARRIAGE BOLT W/SQUARE NUT	863412	J8634-1/2
CRG-385	3/8" X 5" CARRIAGE BOLT W/SQUARE NUT	8635	J8635
CRG-386	3/8" X 6" CARRIAGE BOLT W/SQUARE NUT	8636	J8636
CRG-387	3/8" X 7" CARRIAGE BOLT W/SQUARE NUT	8637	J8637
CRG-388	3/8" X 8" CARRIAGE BOLT W/SQUARE NUT	400012548	J8638
CSW-33	3 X 3" CURVED WASHER 5/8" BOLT	WC-33-5	CW-33-5
CSW-33A	3 X 3" CURVED WASHER 3/4" BOLT	WC-33-6	CW-33-6
CSW-44	4 X 4" CURVED WASHER 3/4" BOLT	GCW41	CW-44-6
CSW-44A	4 X 4" CURVED WASHER 7/8" BOLT	GCW41A	CW-44-7
DAB-3424	3/4" X 24" DOUBLE ARMING BOLT	8894	J8894
DAB-3426	3/4" X 26" DOUBLE ARMING BOLT	8896	J8896
DAB-3428	3/4" X 28" DOUBLE ARMING BOLT	8897	J8897
DAB-3430	3/4" X 30" DOUBLE ARMING BOLT	8898	J8898
DAB-3432	3/4" X 32" DOUBLE ARMING BOLT	889832	J8899
DAB-3434	3/4" X 34" DOUBLE ARMING BOLT	PS889834	J9003
DAB-3436	3/4" X 36" DOUBLE ARMING BOLT	PS889836	J9004
DAB-5810	5/8" X 10" DOUBLE ARMING BOLT	8860	J8860
DAB-5812	5/8" X 12" DOUBLE ARMING BOLT	8862	J8862
DAB-5814	5/8" X 14" DOUBLE ARMING BOLT	8864	J8864
DAB-5816	5/8" X 16" DOUBLE ARMING BOLT	8866	J8866
DAB-5818	5/8" X 18" DOUBLE ARMING BOLT	8868	J8868
DAB-5820	5/8" X 20" DOUBLE ARMING BOLT	8870	J8870
DAB-5822	5/8" X 22" DOUBLE ARMING BOLT	8872	J8872
DAB-5824	5/8" X 24" DOUBLE ARMING BOLT	8874	J8874
DAB-5826	5/8" X 26" DOUBLE ARMING BOLT	8876	J8876



CROSS REFERENCE GUIDE

LHI	PART DESCRIPTION	HUBBELL	MACLEAN
DAB-5828	5/8" X 28" DOUBLE ARMING BOLT	8877	J8877
DAB-5830	5/8" X 30" DOUBLE ARMING BOLT	8878	J8878
DAB-5832	5/8" X 32" DOUBLE ARMING BOLT	8879	J8879
DAB-5834	5/8" X 34" DOUBLE ARMING BOLT	PS887934	J8880
DAB-5836	5/8" X 36" DOUBLE ARMING BOLT	T2060419	J8881
DB-8	DOUBLE ARMING BRACKET	2157	-
DCQ-55-C	QUADRANT STRAIN CLAMP W/CLEVIS EYE FITTING	MD-52-C	FSD-53-C
DCQ-55-N	QUADRANT STRAIN CLAMP - 14K	MD-52-N	FSD-53
DCQ-55-S	QUADRANT STRAIN CLAMP W/SOCKET FITTING	MD-52-S	FSD-53-S
DCQ-68-C	QUADRANT STRAIN CLAMP W/CLEVIS EYE FITTING	MD-61-C	FSD-58-C
DCQ-68-N	QUADRANT STRAIN CLAMP - 15K	MD-61-N	FSD-58
DCQ-68-S	QUADRANT STRAIN CLAMP W/SOCKET FITTING	MD-61-S	FSD-58-S
DET-20	THIMBLE CLEVIS - 20,000 LB	TC-1	FSA-88-5
DET-36	THIMBLE CLEVIS - 36,000 LB	DDT-07	FSA-100-6
DHP-716	7/16 X 4 - 3/4" DRIVE HOOK	C205-0190	J3316P
DLW-38	3/8" DOUBLE COIL LOCK WASHER	C205-0188	J175
DLW-12	1/2" DOUBLE COIL LOCK WASHER	C205-0185	J176
DLW-58	5/8" DOUBLE COIL LOCK WASHER	C205-0186	J177
DLW-34	3/4" DOUBLE COIL LOCK WASHER	C205-0187	J178
DSB-5810	5/8"X10" DOUBLE UPSET SPOOL BOLT	7830	J2396
DSB-5812	5/8"X12" DOUBLE UPSET SPOOL BOLT	7832	J2398
DSB-5814	5/8" X 14" DOUBLE UPSET BOLT	7834	-
ELC-14	14" CLEVIS EYE EXTENSION LINK	L14	CEL-14
FL8-30	FIGURE 8 LINK-30,000 LB	LK830	F8L-30-4.5
FL8-30-90	FIGURE 8 LINK - 90	LK830T	F8L-90-30-4.5
GC-358	GUY CLAMP-THREE 5/8" BOLTS	6461	J931
GL-38	3/8" GROUND LUG	PU764	-
GR-5810C	5/8" X 10' COPPER GROUND ROD	C615800	-
GR-584C	5/4" X 4' COPPER GROUND ROD	C615840	-
GR-585C	5/8" X 5' COPPER GROUND ROD	C615850	-
GR-586C	5/8" X 6' COPPER GROUND ROD	C615860	-
GR-586G	5/8" X 6' GALVANIZED GROUND ROD	8576	-
GR-588C	5/8" X 8' COPPER GROUND ROD	C615880	J8338
GR-588C-13	5/8" X 8' COPPER GROUND ROD - 13 MIL	C615883	-
GR-588G	5/8" X 8' GALVANIZED GROUND ROD	8578	J5328
HGA-58	5/8" HOOK GUY ATTACHMENT	GH5N	GA-54N
HGA-58C	5/8" HOOK GUY ATTACHMENT CLEATS	GH5	J6555
HGA-58CS	5/8" HOOK GUY ATTACHMENT CLEATS & SPUR	GH5ILS	GA-5X
HGA-75	3/4" HOOK GUY ATTACHMENT	GH6N	GA-64N
HGA-75C	3/4" HOOK GUY ATTACHMENT CLEATS	GH6	J6556
HGA-75CS	3/4" HOOK GUY ATTACHMENT CLEATS & SPUR	GH6ILS	GA-6X
HN-38	3/8-16 HEX NUT, GALV	38HGSN	-
HN-12	1/2-13 HEX NUT, GALV	50HGSN	-



CROSS REFERENCE GUIDE

LHI	PART DESCRIPTION	HUBBELL	MACLEAN
HN-58	5/8-11 HEX NUT, GALV	62HGSN	-
HN-34	3/4-10 HEX NUT, GALV	75HGSN	-
HPB-4-6105	6" TO 10-1/2" DIA POLE BAND	DG17B1	J6643
HPB-4-7512R	7-1/2" TO 12" DIA POLE BAND	DG17B2	J6644
HPB-L-2	1/4" X 2" POLE BAND LINK	DC143B1	J6650
HVP-587	5/8" X 7" X 7" PIN WITH 1-3/8" NYLON	4717P	J647Z
ISC-500	INSULATED SECONDARY CLEVIS	0352	J0322
LP-2	2-HOLE LIFT PLATE	7887	J7894
LP-2S	2-HOLE LIFT PLATE WITH SLOT	7888	J7896
LP-3	3-HOLE LIFT PLATE	7897	J7886
LP-3S	3-HOLE LIFT PLATE WITH SLOT	7898	J7890
LPS-58-134	5/8X1-3/4 LINE POST STUD	DF19M1	J25247.1
LPS-58-700	5/8X7-9/16 LINE POST STUD	DF19M2	J25248.1
LPS-58-1000	5/8X10 LINE POST STUD	DF19M19	J25248.3
LPS-34-134	3/4X1-3/4 LINE POST STUD	DF19M3	J25249.1
LPS-34-700	5/8X7-9/16 LINE POST STUD	DF19M4	J25250.8
LSFD-12412PP	1/2X4-1/2 FD LAG SCREW PP	508754 1/2	J8754 1/2P
LSFD-124PP	1/2X4 FD LAG SCREW PP	508754	J8754P
LSFD-14212RP	1/4X2-1/2 FD LAG SCREW PP	-	J8652 1/2
LSFD-383PP	3/8X3 FD LAG SCREW PP	508743	J8743P
LSFD-384PP	3/8X4 FD LAG SCREW PP	508744	J8744P
LSGP-142	1/4X2 GP LAG SCREW	8722GP	J8722
LSGP-516212	5/16X2 GP LAG SCREW	-	J8732 1/2
LSGP-383	3/8X3 GP LAG SCREW	-	J8773
LSGP-383H	3/8X3 GP LAG SCREW HH	DF3L3	-
LSGP-124H	1/2X4 GP LAG SCREW HH	PSC2050591	-
LSNW-142	1/4X2 LAG SCREW NEOP WASHER	PSC2050504	J26486.1
LSTD-124	1/2X4 TD LAG SCREW	508500	J8753 1/2
LVP-585A	5/8X5X5-3/4 PIN W 1" NYLON	881P	J203Z
LVP-585B	5/8" X 5 X 6-1/2" PIN W/1" NYLON	881AP	J204Z
LVP-585C	5/8" X 5" X 8" PIN W/1" NYLON	-	J2802Z
LVP-586A	5/8" X 6" X 5-3/4" PIN W/1" NYLON	884P	J206Z
LVP-586B	5/8" X 6" X 6.5" PIN W/1" NYLON	883P	J207Z
LW-38	3/8" SPLIT LOCK WASHER GALV	DF7W1	J134
LW-12	1/2" SPLIT LOCK WASHER GALV	4035	J138
LW-58	5/8" SPLIT LOCK WASHER GALV	4036	J139
LW-34	3/4" SPLIT LOCK WASHER GALV	4037	J140
MB-10018	1" X 18" MACHINE BOLT W/SQUARE NUT	PSSB101800	-
MB-10020	1" X 20" MACHINE BOLT W/SQUARE NUT	PSSB102000	-
MB-10022	1" X 22" MACHINE BOLT W/SQUARE NUT	PSSB102200	-
MB-10024	1" X 24" MACHINE BOLT W/SQUARE NUT	PSSB102400	-
MB-10026	1" X 26" MACHINE BOLT W/SQUARE NUT	PSSB102600	-
MB-10028	1" X 28" MACHINE BOLT W/SQUARE NUT	PSSB102800	-



CROSS REFERENCE GUIDE

LHI	PART DESCRIPTION	HUBBELL	MACLEAN
MB-1210	1/2" X 10" MACHINE BOLT W/SQUARE NUT	8710	J8710
MB-1212	1/2" X 12" MACHINE BOLT W/SQUARE NUT	8712	J8712
MB-1214	1/2" X 14" MACHINE BOLT W/SQUARE NUT	8714	J8714
MB-1216	1/2" X 16" MACHINE BOLT W/SQUARE NUT	DF2B16	J8716
MB-126	1/2" X 6" MACHINE BOLT W/SQUARE NUT	8706	J8706
MB-127	1/2" X 7" MACHINE BOLT W/SQUARE NUT	8707	J8707
MB-128	1/2" X 8" MACHINE BOLT W/SQUARE NUT	8708	J8708
MB-5810	5/8" X 10" MACHINE BOLT W/SQUARE NUT	8810	J8810
MB-5812	5/8" X 12" MACHINE BOLT W/SQUARE NUT	8812	J8812
MB-5812TDG	5/8" X 12" MACHINE BOLT W/SQUARE NUT - TDG	8812TDG	J8812-T
MB-5814	5/8" X 14" MACHINE BOLT W/SQUARE NUT	8814	J8814
MB-5814TDG	5/8" X 14" MACHINE BOLT W/SQUARE NUT - TDG	8814TDG	J8814-T
MB-5816	5/8" X 16" MACHINE BOLT W/SQUARE NUT	8816	J8816
MB-5816TDG	5/8" X 16" MACHINE BOLT W/SQUARE NUT - TDG	8816TDG	J8816-T
MB-5818	5/8" X 18" MACHINE BOLT W/SQUARE NUT	8818	J8818
MB-5820	5/8" X 20" MACHINE BOLT W/SQUARE NUT	8820	J8820
MB-5822	5/8" X 22" MACHINE BOLT W/SQUARE NUT	8822	J8822
MB-5824	5/8" X 24" MACHINE BOLT W/SQUARE NUT	8824	J8824
MB-5826	5/8" X 26" MACHINE BOLT W/SQUARE NUT	8826	J8826
MB-585	5/8" X 5" MACHINE BOLT W/SQUARE NUT	8805	J8805
MB-586	5/8" X 6" MACHINE BOLT W/SQUARE NUT	8806	J8806
MB-587	5/8" X 7" MACHINE BOLT W/SQUARE NUT	8807	J8807
MB-588	5/8" X 8" MACHINE BOLT W/SQUARE NUT	8808	J8808
MB-589	5/8" X 9" MACHINE BOLT W/SQUARE NUT	8809	J8809
MB-3410	3/4" X 10" MACHINE BOLT W/SQUARE NUT	8910	J8910
MB-3412	3/4" X 12" MACHINE BOLT W/SQUARE NUT	8912	J8912
MB-3414	3/4" X 14" MACHINE BOLT W/SQUARE NUT	8914	J8914
MB-3416	3/4" X 16" MACHINE BOLT W/SQUARE NUT	8916	J8916
MB-3418	3/4" X 18" MACHINE BOLT W/SQUARE NUT	8918	J8918
MB-3420	3/4" X 20" MACHINE BOLT W/SQUARE NUT	8920	J8920
MB-3422	3/4" X 22" MACHINE BOLT W/SQUARE NUT	8922	J8922
MB-3424	3/4" X 24" MACHINE BOLT W/SQUARE NUT	8924	J8924
MB-3426	3/4" X 26" MACHINE BOLT W/SQUARE NUT	8926	J8926
MB-348	3/4" X 8" MACHINE BOLT W/SQUARE NUT	8908	J8908
MB-7812	7/8" X 12" MACHINE BOLT W/SQUARE NUT	DF5B12	J9062
MB-7814	7/8" X 14" MACHINE BOLT W/SQUARE NUT	C2050254	J9064
MB-7816	7/8" X 16" MACHINE BOLT W/SQUARE NUT	C2050255	J9066
MB-7818	7/8" X 18" MACHINE BOLT W/SQUARE NUT	C2050256	J9068
MB-7820	7/8" X 20" MACHINE BOLT W/SQUARE NUT	C2050257	J9070
MB-7822	7/8" X 22" MACHINE BOLT W/SQUARE NUT	C2050258	J9072
MB-7824	7/8" X 24" MACHINE BOLT W/SQUARE NUT	DF5B24	J9074
MB-7826	7/8" X 26" MACHINE BOLT W/SQUARE NUT	PSSB782600	J9076
NWB-50	5/8" NEUTRAL WIRE BRACKET	3470	NWB-5



CROSS REFERENCE GUIDE

LHI	PART DESCRIPTION	HUBBELL	MACLEAN
OEB-5810	5/8" X 10" OVAL EYE BOLT	29960	J9410
OEB-5812	5/8" X 12" OVAL EYE BOLT	29962	J9412
OEB-5814	5/8" X 14" OVAL EYE BOLT	29964	J9414
OEB-5816	5/8" X 16" OVAL EYE BOLT	29966	J9416
OEB-5818	5/8" X 18" OVAL EYEBOLT	29968	J9418
OEB-5820	5/8" X 20" OVAL EYEBOLT	29970	J9420
OEB-586	5/8" X 6" OVAL EYEBOLT	29956	J9406
OEB-588	5/8" X 8" OVAL EYEBOLT	29958	J9408
OEB-589	5/8" X 9" OVAL EYEBOLT	29959	J9409
OEB-3410	3/4" X 10" OVAL EYE BOLT	29980	J9510
OEB-3412	3/4" X 12" OVAL EYE BOLT	29982	J9512
OEB-3414	3/4" X 14" OVAL EYE BOLT	29984	J9514
OEB-3416	3/4" X 16" OVAL EYE BOLT	29986	J9516
OEB-3418	3/4" X 18" OVAL EYEBOLT	29988	J9518
OEB-3420	3/4" X 20" OVAL EYEBOLT	29990	-
OEB-348	3/4" X 8" OVAL EYEBOLT	29978	J9508
OEN-34	3/4" OVAL EYE NUT	6503	J1093
OEN-58	5/8" OVAL EYE NUT	6502	J1092
PGA-548	POLE EYE PLATE W/OUT CLEATS	GEP6LT	PEP-66-45LT
PGA-548C	POLE EYE PLATE CLEATS	GEP6	PEP-66-45
PGA-603	POLE EYE PLATE W/OUT CLEATS	-	PX37BLT
PGA-603C	POLE EYE PLATE CLEATS	-	PX37B
PGA-800	POLE EYE PLATE W/OUT CLEATS	-	EPR877D7RE-LT
PGA-800C	POLE EYE PLATE CLEATS	-	EPR8-77D-7RE
PGPC-56	.025" X 7.5" COPPER POLE GROUND PLATE W/BAR CONNECTOR	-	J9196
PGPC-56EB	.025" X 7.5" COPPER POLE GROUND PLATE W/EYEBOLT CONNECTOR	-	J9195
PJC-1	JUMPER CLAMP - TP - 1 BRONZE	-	J8301
PJC-2	JUMPER CLAMP - BRONZE	-	J8302
PJC-3	JUMPER CLAMP	-	J8300
PTIB-375	POLE TOP INSULATOR BRACKET	IB2	PTB-55W
PTIB-375B	POLE TOP INSULATOR BRACKET	IB4	PTB-55-8
PTIB-450	POLE TOP INSULATOR BRACKET	IB5	PTB-66-H
PTP-152	15" POLE TOP PIN-1" NYLON	2162P	J715Z
PTP-202	20" POLE TOP PIN-1" NYLON	2199P	J740Z
PTP-202A	20" POLE TOP PIN-1-3/8" NYLON	2195P	J720Z
PTP-203	20" 3 HOLE POLE TOP PIN-1" NYLON	2174P	J1220Z
PTPO-212A	OFFSET POLE TOP PIN 1-3/8" NYLON	C206-0271	J25179
QSC-552-C	QUADRANT STRAIN CLAMP-2 BOLT w/ CLEVIS	SWDE46C	FQD-58-2C
QSC-552-N	QUADRANT STRAIN CLAMP-2 BOLT	SWDE46N	FQD-58-2
QSC-552-S	QUADRANT STRAIN CLAMP-2 BOLT w/ SOCKET	SWDE46S	FQD-58-2S
QSC-553-C	QUADRANT STRAIN CLAMP-3 BOLT w/ CLEVIS	SWDE55C	FQD-58-3C
QSC-553-N	QUADRANT STRAIN CLAMP-3 BOLT	SWDE55N	FQD-58-3
QSC-553-S	QUADRANT STRAIN CLAMP-3 BOLT w/ SOCKET	SWDE55S	FQD-58-3S



CROSS REFERENCE GUIDE

LHI	PART DESCRIPTION	HUBBELL	MACLEAN
QSC-724-C	QUADRANT STRAIN CLAMP-4 BOLT w/ CLEVIS	SWDE63C	FQD-68-3C
QSC-724-N	QUADRANT STRAIN CLAMP-4 BOLT	SWDE63N	FQD-68-3
QSC-724-S	QUADRANT STRAIN CLAMP-4 BOLT w/ SOCKET	SWDE63S	FQD-68-3S
RBC-100	THIMBLE EYE BONDING CLAMP	G5060	J3230
RBC-200	TWINEYE BONDING CLAMP	G5061	J3231
RBC-300	TRIPLEEYE BONDING CLAMP	G5063	J3233
RBC-400	PISA THIMBLEEYE BONDING CLAMP	G5067	J26714
RBC-500	PISA THIMBLEEYE BONDING CLAMP	G5068	J26715
RBC-600	PISA TWINEYE BONDING CLAMP	G5069	J26716
RBC-700	PISA TRIPLEEYE BONDING CLAMP	PSC203-0521	-
RW-12	1/2" USS ROUND WASHER HDG	6803	J1086
RW-34	3/4" USS ROUND WASHER HDG	6806	J1089
RW-38	3/8" USS ROUND WASHER HDG	6801	J1084
RW-58	5/8" USS ROUND WASHER HDG	6805	J1088
SDC-400	SECONDARY DEADEND CLEVIS	0377	J1399
SDC-400R	SECONDARY DEADEND CLEVIS	0327	J1300
SE-1	1/2" SOCKET EYE-16,000 LB	SA04	SI-500
SE-2	5/8" SOCKET EYE-18,000 LB	SA05	SI-625
SE-3	3/4" SOCKET EYE-25,000 LB	SA06	SI-750
SE-4	7/8" SOCKET EYE-25,000 LB	SA07	SI-875
SE-5	1" SOCKET EYE-30,000 LB	SA10	SI-1000
SE-6	1-1/8" SOCKET EYE-30,000 LB	SA11	SI-1125
SE-7	1-3/8" SOCKET EYE-30,000 LB	SA13	SI-1375
SE-8	1-3/4" SOCKET EYE-30,000 LB	SA16	SI-1750
SGF-2E-1	SIDEWALK GUY END FITTING	502	J1502
SGF-2P	SIDEWALK GUY POLE PLATE	501	J1501
SLC-461-C	STRAIGHT LINE CLAMP-1 BOLT	MDE-40-C	SDE-37F-C
SLC-461-N	STRAIGHT LINE CLAMP-1 BOLT	MDE-40-N	SDE-37F
SLC-461-S	STRAIGHT LINE CLAMP-1 BOLT	MDE-40-S	SDE-37F-S
SLC-462-C	STRAIGHT LINE CLAMP-2 BOLT	MDE-46-C	SDE-46F-C
SLC-462-N	STRAIGHT LINE CLAMP-2 BOLT	MDE-46-N	SDE-46F
SLC-462-S	STRAIGHT LINE CLAMP-2 BOLT	MDE-46-S	SDE-46F-S
SLC-652-C	STRAIGHT LINE CLAMP-2 BOLT	MDE-60-C	SDE-73F-C
SLC-652-N	STRAIGHT LINE CLAMP-2 BOLT	MDE-60-N	SDE-73F
SLC-652-S	STRAIGHT LINE CLAMP-2 BOLT	MDE-60-S	SDE-73F-S
SLN-38	3/8-16 SQUARE LOCK NUT	3510	J8581
SLN-12	1/2-13 SQUARE LOCK NUT	3511	J8582
SLN-58	5/8-11 SQUARE LOCK NUT	3512	J8583
SLN-34	3/4-10 SQUARE LOCK NUT	3513	J8584
SLN-78	7/8-9 SQUARE LOCK NUT	3514	J8584 1/2
SLN-100	1-8 SQUARE LOCK NUT	3515	J8585
SN-38	3/8-16 SQUARE NUT	8600M	J8561
SN-12	1/2-13 SQUARE NUT	55083P	J8562



CROSS REFERENCE GUIDE

LHI	PART DESCRIPTION	HUBBELL	MACLEAN
SN-58	5/8-11 SQUARE NUT	55084P	J8563
SN-34	3/4-10 SQUARE NUT	55085P	J8564
SN-78	7/8-9 SQUARE NUT	56538P	J8564 1/2
SSB-5810	5/8" X 10" UPSET SPOOL BOLT	7742	J2344 1/2
SSB-5812	5/8" X 12" UPSET SPOOL BOLT	7743	J2346 1/2
SSB-5814	5/8" X 14" UPSET SPOOL BOLT	7744	J2348 1/2
STC-1MG	1-1/2" X 1/4" X .148 GALV STAPLE	C205-0247	J1672
STD-3C	1-1/2" X 5/16" X .144 CU STAPLE	C205-0225	J6494
STD-3G	1-1/2" X 3/8" X .148 GALV STAPLE	C205-0214	J172
SWC-225	2-1/4" X 3/16" SQ C WAS-11/16 H	681012	J6821
SWC-250	2-1/2" X 3/16" SQ C WAS-11/16 H	PS6822	J6822
SWC-300A	3" X 1/4" SQ CURV WASHER-11/16 H	682312	J113
SWC-300B	3" X 1/4" SQ CURV WASHER-13/16 H	682212	J6823
SWC-400A	4" X 3/16" SQ CURV WASHER-13/16 H	DF4W15	-
SWC-400B	4" X 1/4" SQ CURV WASHER-15/16 H	680912	J6829
SWC-400C	4" X 1/4" SQ CURV WASHER-13/16 H	-	J6836
SWF-200A	2" X 1/8" SQ FL WASHER-9/16 H	6811	J1073
SWF-200B	2" X 1/8" SQ FL WASHER-11/16 H	6812	J1074
SWF-225A	2-1/4" X 3/16" SQ WASHER-11/16 H	6813	J1075
SWF-225B	2-1/4" X 3/16" SQ WASHER-13/16 H	6814	J1076
SWF-300A	3" X 3/16" SQ FL WASHER-7/8 H	6816	J1078
SWF-300B	3" X 1/4" SQ FL WASHER-13/16 H	682212	J1078
SWF-400A	4" X 3/16" SQ FL WASHER 13/16 H	6818	J1080
SWF-400B	4" X 1/4" SQ FL WASHER 7/8 H	680912	J1082
SWF-400C	4" X 1/4" SQ FL WASHER 15/16 H	6819	-
TEL-58	5/8" THIMBLE EYELET	6519	J6550C
TEL-34	3/4" THIMBLE EYELET	6520	J6551
TEN-34	3/4 THIMBLE EYENUT	6511	J6511
TEN-58	5/8 THIMBLE EYENUT	6510	J6510
TGL-110	TRANSFORMER GROUND CONNECTOR	GTCL23A	-
TGL-208	TRANSFORMER GROUND CONNECTOR	GTCLS34A	TG-820
TMSA-15	TANK MOUNTED SURGE ARRESTER BRACKET	DM26S2	-
TMSA-15GH	TANK MOUNTED SURGE ARRESTER BRACKET	273228-3007	J26935
TMSA-20	TANK MOUNTED SURGE ARRESTER BRACKET	T2060450	-
TMSA-20GHSS	TANK MOUNTED SURGE ARRESTER BRACKET W/HARDWARE	-	J26710
UGA-334	UNIVERSAL GUY ATTACHEMENT-15K	-	UGA-65-3
UGA-434	UNIVERSAL GUY ATTACHEMENT-21K	-	UGA-66-4
UGA-634	UNIVERSAL GUY ATTACHEMENT-35K	-	UGA-66-6
UGA-678	UNIVERSAL GUY ATTACHEMENT-35K	-	UGA-77-6
YCE-30	Y-CLEVIS	854502000	-
YCE-30-90	Y-CLEVIS EYE 90-30,000LB	YCS059030	RYCE-65-625A





ORDERS:

Orders@LineHardware.com

RFQ:

Quotes@LineHardware.com

PRODUCT & TECHNICAL INFORMATION:

Engineering@LineHardware.com

GENERAL INFORMATION:

Info@LineHardware.com



LineHardware.com



Reference Guide



314-531-1005 - Office



LineHardware.com